



Investor Presentation

May 2026

CSE:MAV | FWB:VR61 | OTC:VRCFF

Cautionary and Qualified Person Statements



Legal Disclaimer

This presentation of Maverick Gold and Silver Corp. ("Maverick" or the "Company") is for information only and shall not constitute an offer to buy, sell, issue or subscriber for, or the solicitation of an offer to buy, sell, issue or subscribe for any securities in any jurisdiction. The information contained herein is subject to change without notice and is based on publicly available information, internally developed data and other sources. Where any opinion or belief is expressed in this presentation, it is based on the assumptions and limitations mentioned herein and is an expression of present opinion or belief only. No warranties or representations can be made as to the origin, validity, accuracy, completeness, currency or reliability of the information. The Company disclaims and excludes all liability (to the extent permitted by law) for losses, claims, damages, demands, costs and expenses of whatever nature arising in any way out of or in connection with the information in this presentation, its accuracy, completeness or by reason of reliance by any person on any of it. This presentation should not be construed as legal, financial or tax advice to any individual, as everyone's circumstances are different. Readers should consult with their own professional advisors regarding their particular circumstances. There are certain risks inherent in an investment in the securities of the Company that prospective investors should carefully consider before investing in the securities of the Company.

Forward Looking Statements

This presentation contains "forward-looking information" within the meaning of applicable Canadian securities legislation and "forward-looking statements" within the meaning of applicable United States securities legislation, together, "forward-looking statements". Such forward-looking statements contain known and unknown risks, uncertainties, and other factors that may cause our actual results, performance, or achievements, or developments within our industry, to differ materially from the anticipated results, performance, or achievements expressed or implied by such forward-looking statements. Forward-looking statements are statements that are not historical facts and are generally, but not always, identified by the words "expects", "aims", "plans", "anticipates", "believes", "intends", "estimates", "projects", "potential", and similar expressions, or that conditions "will", "would", "may", "could", or "should" occur. Forward-looking statements included in this presentation include but are not limited to: statements with respect to the Company's expectations regarding drilling and exploration activities on properties in which the Company has or may acquire an interest; and information with respect to the Company's continued exploration programs (including size and budget). Information inferred from the interpretation of exploration results and information concerning potential mineralization may also be deemed to be forward-looking statements, as such information constitutes a prediction of what might be found to be present if a project is actually developed. There can be no assurance that such statements will prove to be accurate. Actual results and future events may differ materially from those anticipated in such statements and readers are cautioned not to place undue reliance on these forward-looking statements that speak only as of their respective dates. Important factors that could cause actual results to differ materially from the Company's expectations could include among others: risks related to fluctuations in mineral prices; uncertainties related to raising sufficient financing to fund planned work in a timely manner and on acceptable terms; changes in planned work resulting from weather, logistical, technical, or other factors; risks associated with emerging and developing markets; the possibility that results of work will not fulfil expectations and realize the perceived potential of the properties in question; political uncertainty and other risks of doing business in Suriname; the Company's inability to obtain property rights and interests as currently proposed or at all; uncertainties in the estimation of any potential future mineral resources or reserves; the possibility that required permits may not be obtained in a timely manner or at all; the possibility that capital and exploration costs may be higher than estimated and may preclude or render future exploration and development uneconomic; risk of accidents, equipment breakdowns or labour disputes or other unanticipated difficulties or interruptions; the possibility of cost overruns or other unanticipated expenses in work programs; the risk of environmental contamination or damage resulting from the Company's operations; risks associated with title to mineral properties; risk associated with the COVID-19 pandemic; and other risks and uncertainties discussed elsewhere in the Company's documents made publicly available from time to time. These statements are based on a number of assumptions; including assumptions regarding general market conditions, the availability of financing for proposed transactions and programs on reasonable terms, and the ability of outside service providers to deliver services in a satisfactory and timely manner. Forward-looking statements are based on the beliefs, estimates, and opinions of the Company's management on the date the statements are made. Except as expressly required by applicable securities laws the Company undertakes no obligation to update these forward-looking statements in the event that management's beliefs, estimates, opinions or other factors, should change.

Public Data

This presentation also contains or references certain industry data which is based upon information from independent industry publications, market research, analyst reports and surveys and other publicly available sources. Although the Company believes these sources to be generally reliable, such information is subject to interpretation and cannot be verified with complete certainty due to limits on the availability and reliability of raw data, the voluntary nature of the data gathering process and other inherent limitations and uncertainties. The Company has not independently verified any of the data from third party sources referred to in this presentation and accordingly, the accuracy and completeness of such data is not guaranteed.

Confidentiality

This presentation is confidential and is being provided to you solely for your information and may not be reproduced, in whole or in part, in any form or forwarded or further distributed to any other person. Any forwarding, distribution or reproduction of this presentation, in whole or in part, is unauthorized. By accepting and reviewing this presentation, you acknowledge and agree (i) to maintain the confidentiality of this presentation and the information contained herein, (ii) to protect such information in the same manner you protect your own confidential information, which shall be at least a reasonable standard of care, and (iii) to not utilize any of the information contained herein except to assist with your evaluation of the Company. This version of the presentation supersedes and replaces any and all versions of this presentation previously provided to you.

Qualified Persons

Helgi Sigurgeirson, B.Sc., P.Geo., an independent contractor to the company and a "Qualified Person" as defined under National Instrument 43-101, has reviewed and approved the scientific and technical information in this presentation for the Silver Vista, Mal-Wen, and Jericho properties.

Kenneth Tullar C.P.Geo, an independent contractor to the company and a "Qualified Person" as defined under National Instrument 43-101, has reviewed and approved the scientific and technical information in this presentation for the Gator property.

Investment Highlights



Maverick Gold and Silver is:

- An exploration company that is developing projects in North America.
- Focused on gold, silver and copper
- Identifying and developing high potential assets

Exposure to High-Potential Projects in two Tier-1 Jurisdictions

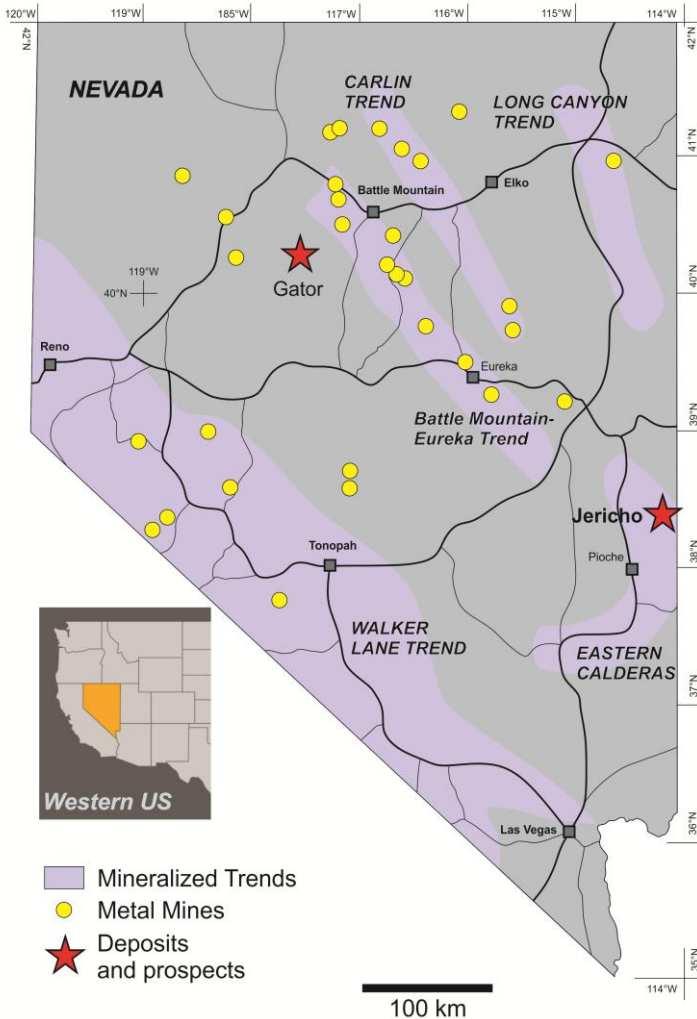
Maverick holds the **Silver Vista Project in British Columbia** and the **Jericho and Gator Projects in Nevada** – all located in mining-friendly, politically stable jurisdictions known for permitting efficiency and strong infrastructure. This reduces geopolitical risk and increases the likelihood of long-term project advancement.

Three highly prospective **drill-ready** properties:

- Gator – Targeting distal disseminated gold targets
- Jericho – Epithermal silver-gold vein system traced over multiple kilometres
- Silver Vista – Sedimentary hosted copper and silver mineralization

All projects are road accessible and are situated in established mining jurisdictions with excellent access to services, in-country support, and progressive government policies

Nevada – A Premier Mining Jurisdiction



Pro-Mining Regulations

Clear, stable framework for permitting

Top-Ranked Globally

Consistently ranked as one of the most attractive jurisdictions in the world

Strong Infrastructure

Roads, power, skilled workforce

Proven Geology

World-class gold & silver districts

Favorable Taxes

No state income tax; competitive royalties

Deals are getting done

A recent uptick in M&A activity in the State

The state of Nevada produced 3,479,748 troy ounces gold in 2024, which was 68% of all U.S. gold production **

** Source: Jowitt, S.M., Micander, R., Lindsey, C., Fisher, T., Reynolds, D., and Lu, C., 2025, The Nevada mineral industry 2024: Nevada Bureau of Mines and Geology Special Publication MI-2024, 105p.

Gator Property – Introduction

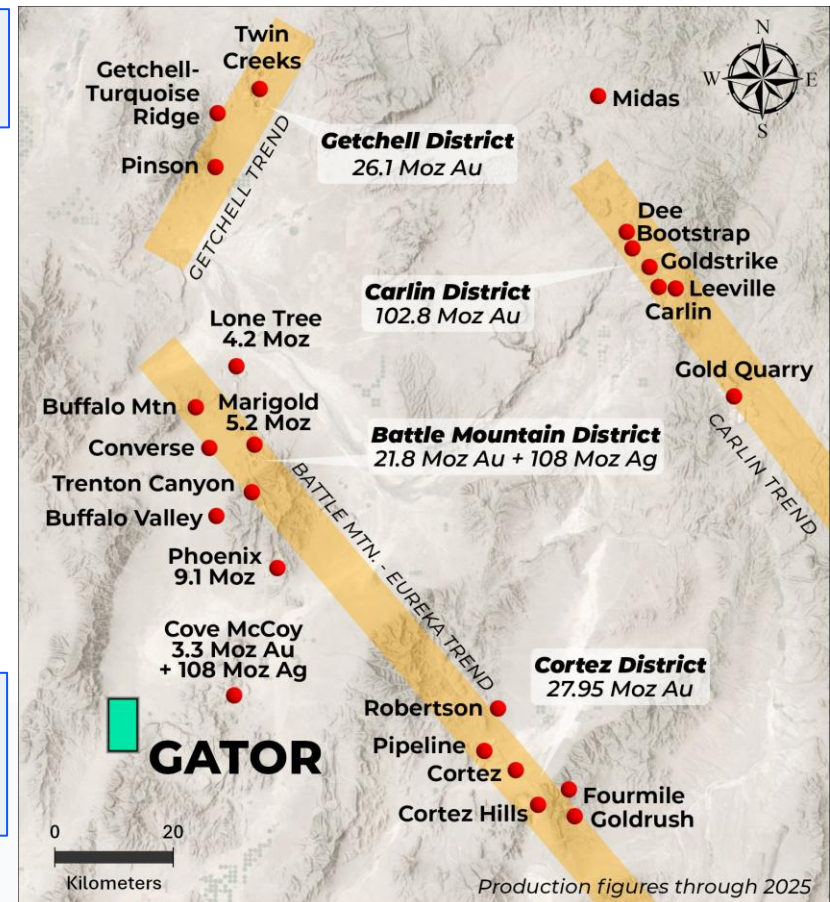
Gator property is an advanced stage exploration property that currently has an existing notice of intent, permit and bond in place.

- Located 55 km SSW of Battle Mountain, Nevada
- within 60 km radius of 35 Moz of Au production and resources
- made up of 160 mining claims that cover 13.4 square kilometres
- located on US federal land under administration of the Bureau of Land Management (or 'BLM')
- potential for bulk-tonnage precious metals mineralization
- setting and geologic characteristics comparable to Lone Tree Mine and Cove-McCoy District

Gator lies along a broad 110 km long NS structural trend that plays a prominent role in mineralization in the Getchell trend, Battle Mountain-Eureka trend, and greater Battle Mountain region.

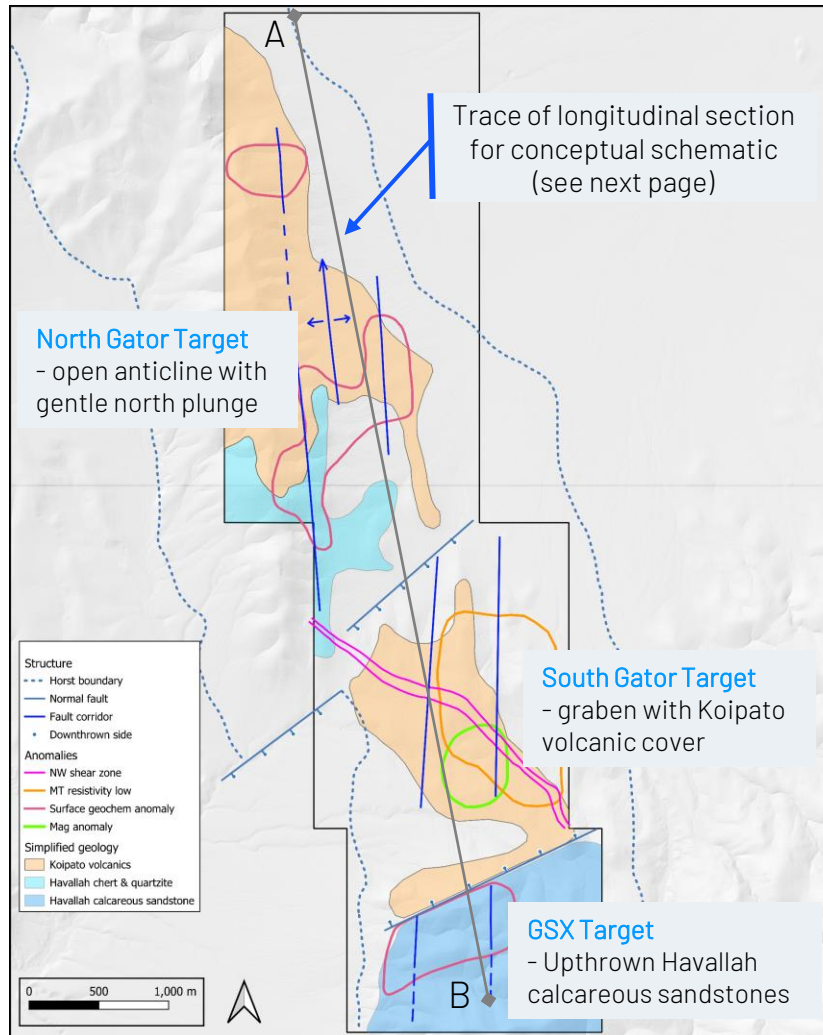
A majority of northern Nevada precious metal districts and deposits are related to deep crustal structures and boundaries

Gator lies along the NNW striking West Central Boundary, a noted crustal boundary



Exploration in the Battle Mountain area dates back to the 1860's. Even after +150 years of history, the district remains one of Nevada's more prospective regions.

Gator Property – Favourable geology



Favourable structural features:

7 km long NS fault corridor – long life feature providing primary control to mineralizing system

Cross-cutting NW and NE structures – critical secondary controls

Uplifted horst block exposes favorable calcareous sandstones comparable to regional ore deposits at Lone Tree and Converse

Within South Gator graben, NS and NW structural intersection with coincident intrusives, magnetic anomaly, and MT anomaly beneath volcanic lithocap – likely center and heat engine for hydrothermal system

Favourable geophysics and geochemistry:

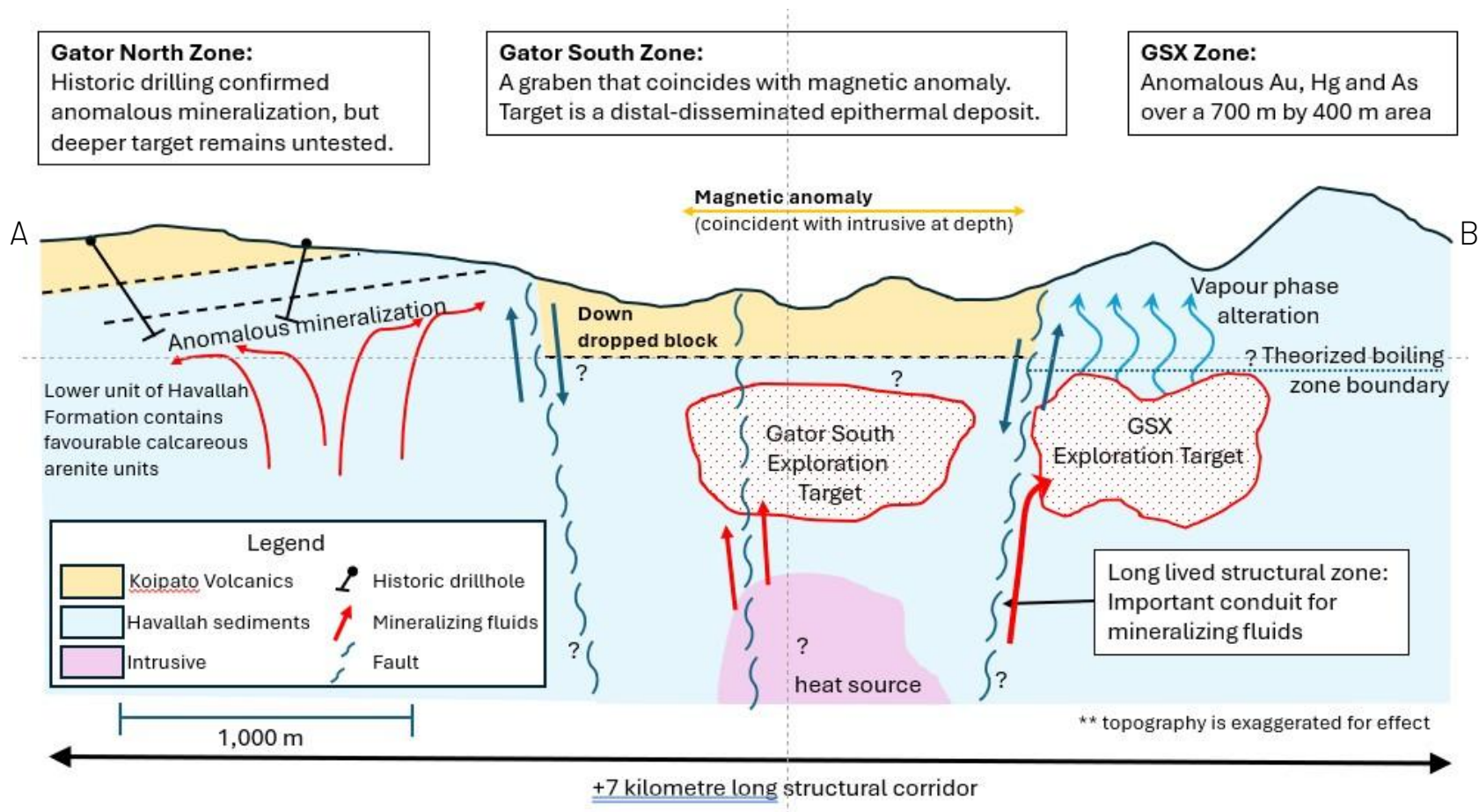
MT anomaly indicates low rock resistivity at depth – indicative of interconnected sulphides or hydrothermal argillic alteration in this type of system

Highly anomalous Hg and Sb in silicified sandstones at GSX – interpreted to be vapor phase alteration above boiling zone at depth.

Project is derisked through 3 years of persistent exploration

Gator Property – Schematic Interpretation

The Gator Property has two compelling exploration targets



Gator Property – Drill-ready exploration Targets **MAVERICK** — GOLD & SILVER —



The GSX Target:

Vapour phase altered Havallah sediments with anomalous Au, Hg and As cover an area measuring **400 m by 700 m**.

Two compelling drill-ready targets :

Persistent alteration, structural preparation, and anomalous Au-Ag-Zn-As-Sb-Hg over the 7 km long NS fault corridor indicate a distal disseminated Au-Ag system of significant size

At Gator South, coincident NE structure, hypabyssal intrusives, alteration, and low resistivity MT anomaly lie above a mag-interpreted intrusive center within a volcanic-capped graben

At GSX, high level silicification and anomalous Au, Hg, and Sb within calcareous sandstones are related to a long-lived graben fault system



The Gator South Target:

A graben that crosscuts a +7km long structural trend

Jericho Property – Introduction

Property Overview

- an option to earn a 100% interest
- made up of 85 mineral claims covering 6.8 square kilometres
- located in Lincoln County, approximately 40 km northeast of Pioche, Nevada.

Exploration upside

- high grade gold and silver mineralization at surface
- no known recent exploration
- access to historic mapping and sampling accelerates Maverick's work program

Geological Context

- caldera setting with intermediate to silicic volcanic rocks
- district hosts multiple known gold-silver systems
- property is host to a low sulphidation epithermal deposit
- mineralization is made up of structurally controlled quartz veins, breccias, and stockwork zones hosted in andesites that are variably silicified, propylitized and argillized



The Pioche Mining District

A storied past...

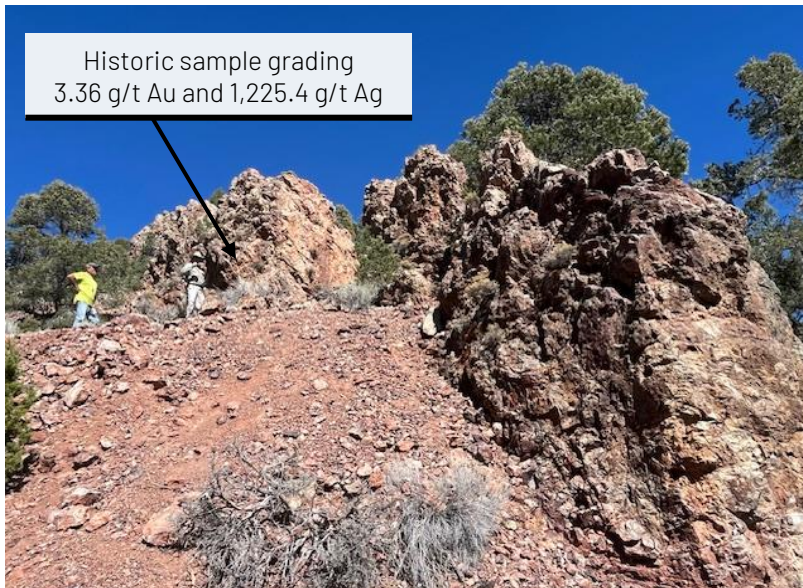
The Pioche Mining District grew rapidly and became one of the most important silver-producing regions in the state of Nevada by the early 1870's.



Jericho Property – Mineralizing System

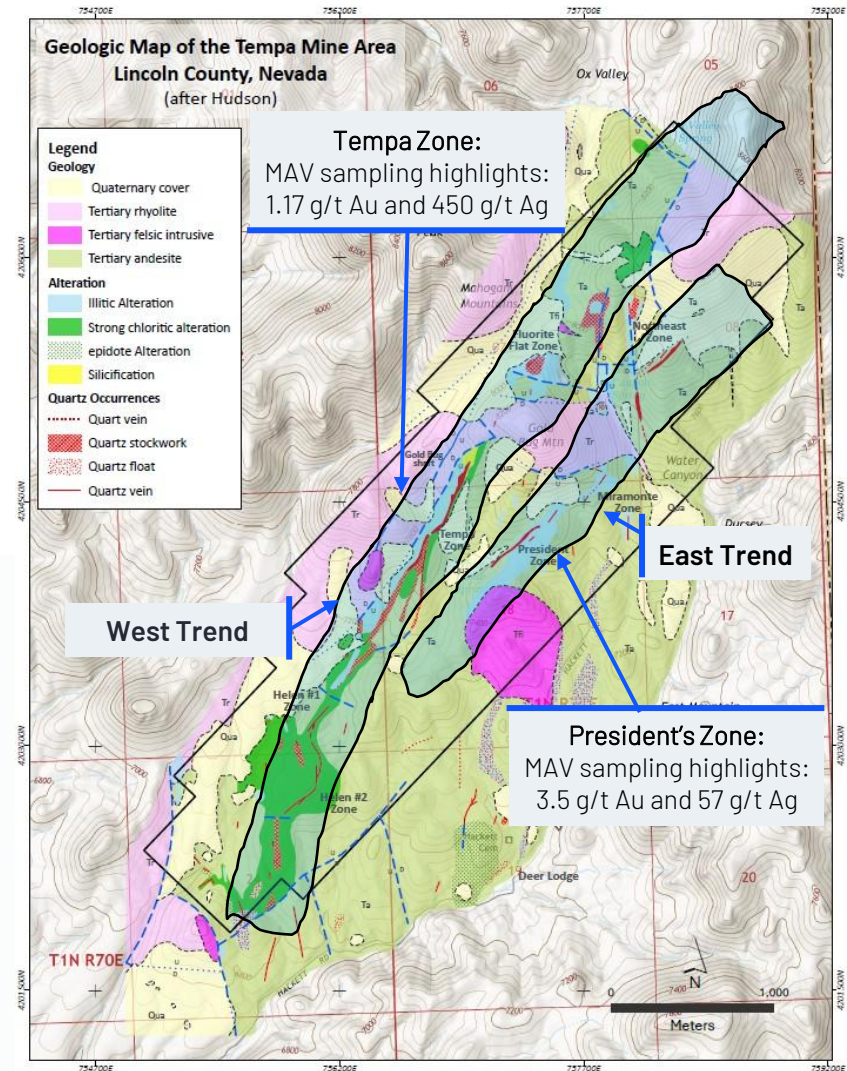
The Jericho property hosts two sub-parallel northeast striking mineralized trends:

- West Trend - traced for in excess of **four kilometres**, is made up of the Helen, Tempa and Fluorite Flat Zones
- East Trend - traced for approximately **two kilometres**, is made up of the President's, Miramonte and Northeast Zones.



Historic sample grading
3.36 g/t Au and 1,225.4 g/t Ag

The Tempa Zone:
3 to 6 metre wide quartz vein can be traced along surface for in excess of 500 metres. The footwall is made up of a 5 to 12 metre wide zone of stockwork.



Jericho Property – Geological Model

The Jericho Property is host to a low-sulphidation epithermal gold-silver deposit

Principal take-aways

Surface geology represents the upper levels of a preserved low sulphidation vein system

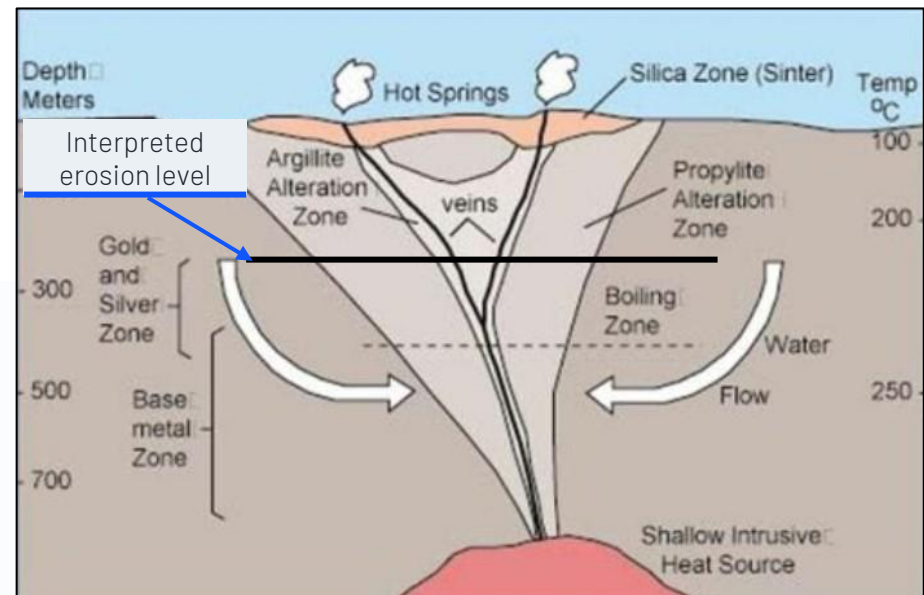
No recent exploration on the project

High grade vein systems plus vein-adjacent stockwork zones present bulk tonnage potential

Indications that mineralization at surface represents the upper level of the epithermal system include: bladed quartz after calcite, low temperature wallrock alteration, no base metals

The mineralizing system features many favorable elements:

- Multi-kilometre strike extent
- Quartz-adularia +/- calcite veins and sheeted/stockwork quartz tabular zones
- Very clean system - low base metal and accessory As-Sb-Hg content
- Projection of mineralized structures into and below unmineralized cover
- Low temperature wallrock alteration trending into illitic and chloritic zones



A model showing the formation of a typical low-sulphidation epithermal system with the interpreted level of erosion at the Jericho Property.

British Columbia – An exploration hotbed



World-class geology and mineral endowment

Hosts a wide range of large, high-quality mineral systems.

Clear and stable mining legislation

Provides companies with legal certainty across the exploration-to-production pipeline.

Excellent infrastructure and access

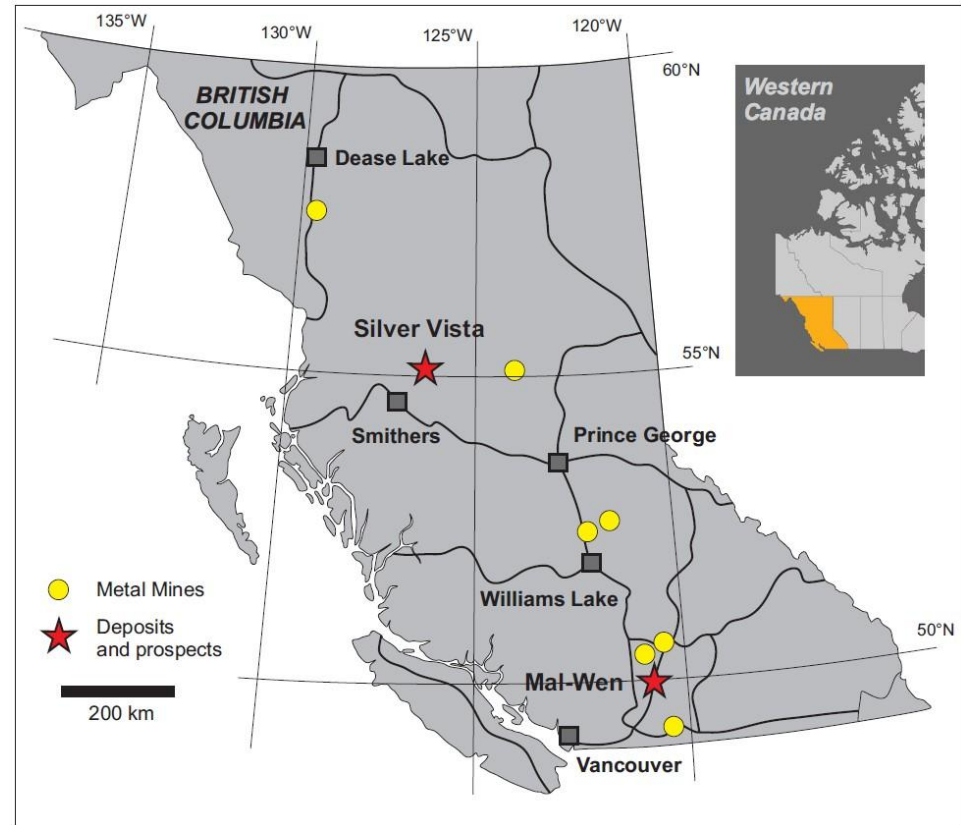
Established road networks, grid power, rail access, and proximity to deep-water ports.

Strong technical, financial, and service ecosystem

Companies headquartered or operating in B.C. direct access to experienced talent, capital markets, and technical expertise.

Supportive government and geological data availability

The province actively supports responsible mineral development improving discovery success and reducing exploration risk.



Year	Exploration spending in British Columbia
2022	~\$740 million
2023	~\$643 million
2024	~\$552 million

Source: www2.gov.bc.ca/gov/content/industry/mineral-exploration-mining/british-columbia-geological-survey/mineral-development-office/statistics

Silver Vista Property – Introduction

Silver Vista covers 4,839 hectares with multiple **stacked, strata-bound silver-copper ± zinc horizons** hosted in **stratiform sedimentary sequences**.

Located approximately **55 km northeast of Smithers** and ~300 km northwest of Prince George.

Located in the Omineca Mining Division within the traditional territory of the Lake Babine Nation.

Features gentle topography with year-round road access via established forest service and logging infrastructure.



The main showing at the Silver Vista property

Strategic Rationale

Located in a mining-friendly jurisdiction of British Columbia with excellent infrastructure and year-round road access.

Silver and copper are key metals in the electrification and clean-energy transition.

Significant upside potential with multiple untested targets and strong historical intercepts.

Near-Term Milestones

Permitting underway for follow-up drilling on priority zones, including the MR prospect.

Ongoing target generation: mapping, geochemistry, and geophysics to define new drill targets.

Advancing the project toward **drill-ready status** to unlock value through discovery.

District setting prospective for **bulk-tonnage, stratabound copper-silver mineralization**.

Silver Vista Property – Geology and results



Regional Setting

The property is approximately 40 km north of Blue Lagoon's Dome Mine, approximately 23 km WSW of American Eagle Gold's Nak Project and approximately 30 km west of Amarc Resources' Duke Cu-Au porphyry deposit.

Geological Setting

Mineralization hosted in Jurassic aged Hazelton Group sediments as **stratiform horizons**, often stacked, suggesting potential for a large-scale system.

Deposit style is consistent with a **sediment-hosted, stratabound Cu-Ag system**.

These systems often contain **significant by-product silver, cobalt, and zinc**, offering multi-metal upside.

2021 Drill Program Highlights

A 1,507 m / 9-hole program delivered the best results to date:

SV21-07 - 46 m (from 106m) averaging 48 g/t Ag and 0.62% Cu

Including 17 m at 94 g/t Ag and 1.34% Cu

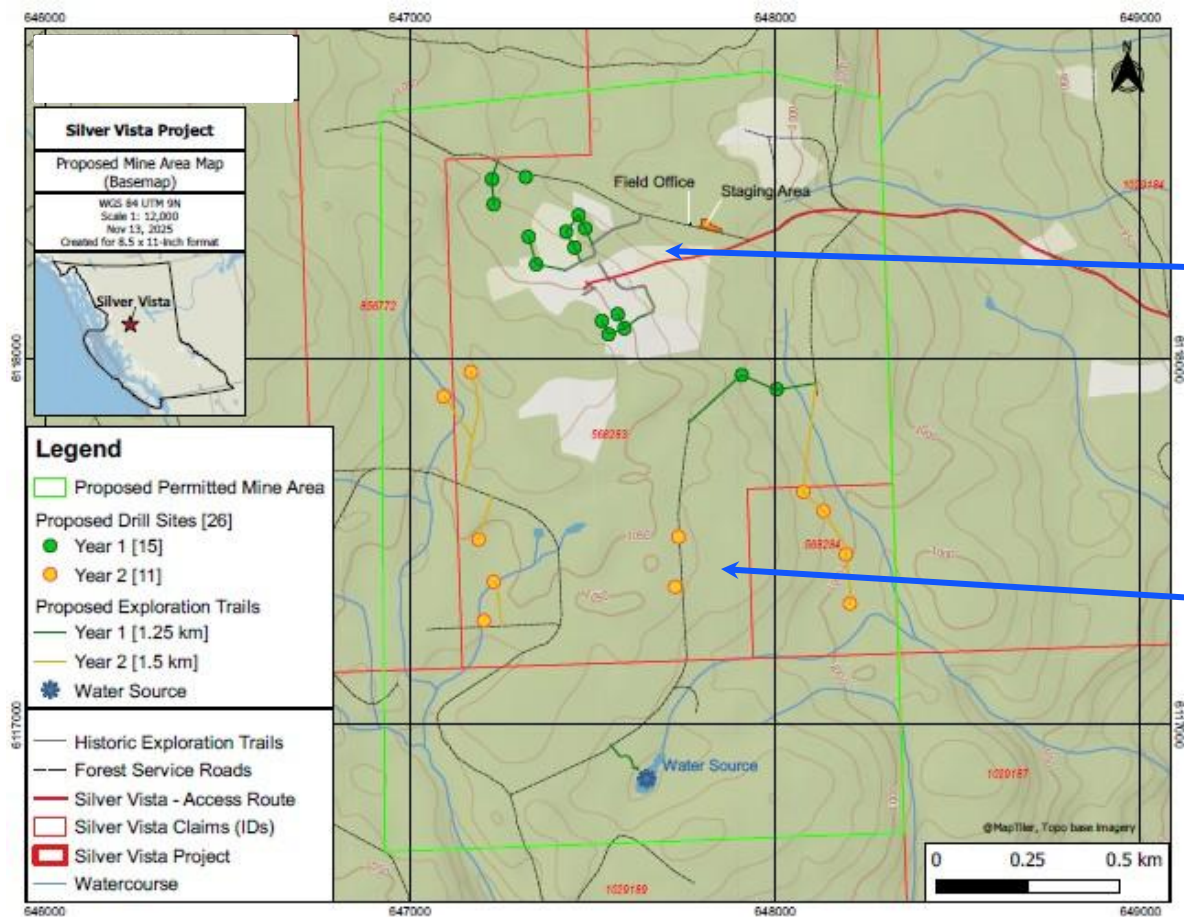
Peak grades: **431 g/t Ag (121-122 m)** and **2.57% Cu (112-113 m)**



SV21-07 from 112.63 m to 125.35m

The drill results referenced above are from historic drilling. The Company has not independently verified the results.

Silver Vista Property – 2026 Drill Targets



MR Target

- Follow up to successful 2021 drill program
- Holes planned to depths of up to 250m

MR Target Expansion

- Expansion predicated on successful Year 1 drilling
- Widely spaced to cover as many prospective zones as possible

DRILL PROGRAM FOR 2026 IS CURRENTLY IN THE PERMITTING STAGE

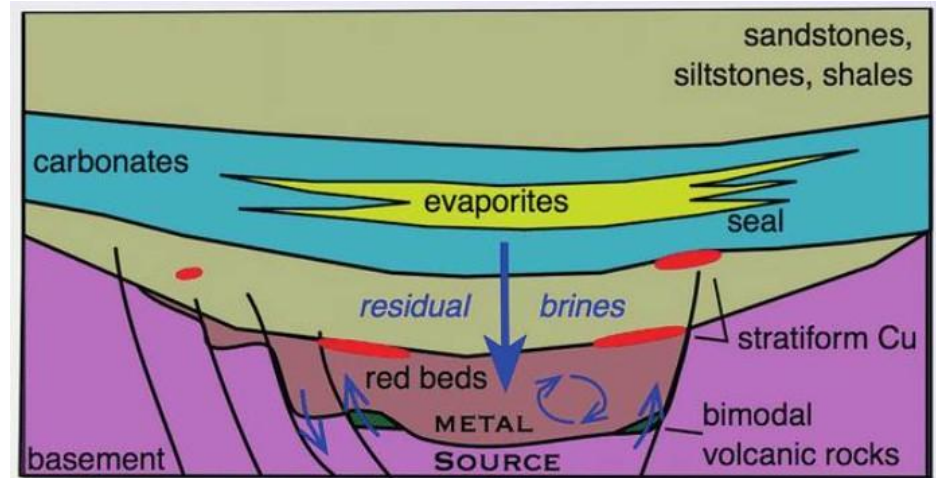
Silver Vista Property – Geological Model

AN INTRODUCTION TO SEDIMENT HOSTED COPPER-SILVER DEPOSITS

Sediment hosted Cu-Ag deposits account for ~23% of known global copper resources, second only to porphyry deposits.

Sediment hosted copper silver deposits are:

- a major source of copper and silver for the global copper industry.
- form in sedimentary basins where copper and silver-rich fluids interact with permeable host rocks under reducing conditions.
- typically occur as layers or lenses of mineralization that are interbedded with sedimentary strata.
- considered highly attractive exploration targets due to their economic importance, consistent grades, and strong lateral continuity



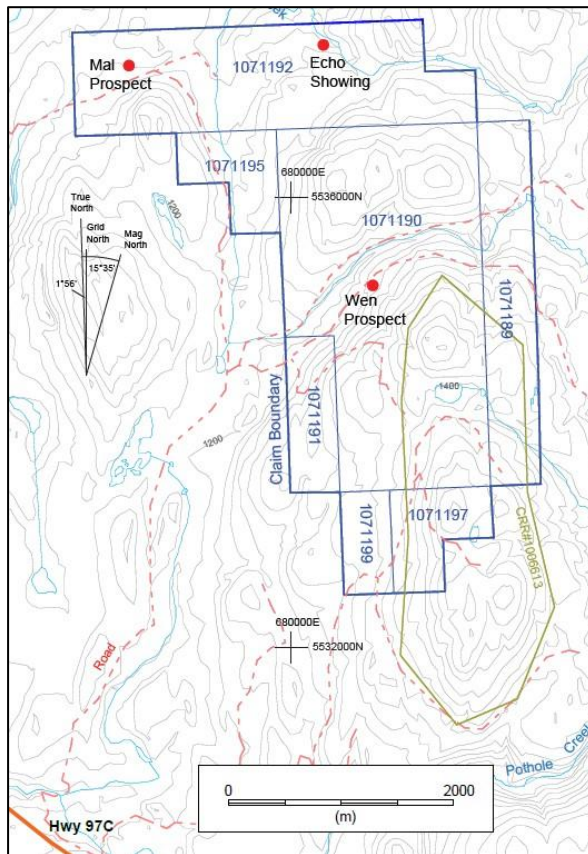
Location	Mine/Project - Owner	tonnes(M)	Ag(g/t)	Cu(%)
Montana	Libby(Montanore) - Hecla Mining	101.8	54.9	0.70
Montana	Rock Creek - Hecla Mining	80.7	51.4	0.70
Montana	Troy(Spar Lake) Production - Hecla Mining	38.7	35.7	0.46
Montana	Troy(Spar Lake) Resources - Hecla Mining	42.0	51.0	0.68
BC	Silver Vista Hole SV21-07 (46 m interval)*		48.0	0.62

* Interval is given for illustrative purposes only. This one hole is not an average or representative of the deposit and not an indication of future results.

Mal-Wen Property – Introduction

The Mal Wen property is within the eastern belt of the southern Nicola Group and is prospective for an alkalic porphyry

Mines hosted within the Nicola Group include: Ajax, New Afton and Copper Mountain



The Mal-Wen Property is about 30 km southeast of Merritt, in south central British Columbia.

The property consists of 5 mineral claims with a total area of 2328.96 hectares.

The claims are 100% owned.

Several styles of mineralization recognized within the property.

Primary targets are the Mal and Wen prospects

The Echo Showing remains to be fully tested.

2026 Exploration – Work Programs are underway **MAVERICK** — GOLD & SILVER —

Jericho

Phase 1



- Data compilation
- Detailed geological mapping
- Prospecting
- Surface sampling

Gator

Phase 1



- Geophysics
- Detailed geological mapping
- Surface sampling

Silver Vista

Phase 1



- Permitting
- Data Compilation
- Relogging core

Phase 2 (pending permitting)



- Drilling

Phase 2 (permit to be modified)



- Drilling

Phase 2 (pending permitting)



- Drilling

Management and Directors



Glen R. Watson – President & CEO & Director

Glen Watson is a capital-markets and corporate-development executive with a track record of helping early-stage and growth companies raise capital, secure strategic partners, and sharpen their market story. He has held senior roles across investor relations, business development, and project finance in the resource sector, contributing to successful equity raises, sustained capital-markets visibility, and project ramp-ups. Glen has previously served as President, CEO, and Director of issuers listed on the TSX Venture Exchange and the Canadian Securities Exchange, where he led corporate strategy, deal-making, and investor engagement.

Christopher Gulka, CPA, CA, CFA – CFO & Director

Christopher Gulka serves as CFO and has more than 30 years of experience in public-company finance, valuations and capital-markets. He earned a Bachelor of Commerce (with Distinction) at the University of Alberta and holds the CPA, CA and CFA designations. Chris leads budgeting, reporting, internal controls and transaction execution for CRIT.

Chris Farnworth – Director

Business-development and corporate-finance professional with over 20 years in the mining and exploration sector. Advises on IPO preparation, restructurings, and complex transactions across TSX, LSE, AIM, and Frankfurt. Senior affiliate with CRJ Capital Partners, Barros Group, and Swiss Alpine Trust.

Ian Foreman, B.Sc., P.Geo., – VP, Exploration

Ian Foreman is a professional geoscientist with over 30 years of experience in mining and mineral exploration across Canada, Peru, Namibia, the United States, and Mexico. A Queen's University geology graduate, he has advanced projects from grassroots to large-scale drilling and held senior leadership roles within junior exploration companies.

Ron Shenton – Senior Advisor

Capital-markets and corporate-development specialist with 40+ years' experience working with exploration issuers. Former broker, CEO, director, and IR/PR executive. Focused on investor relations, market positioning, fundraising strategy, listing readiness, and strategic introductions that help convert technical milestones into financing traction.

Peter Baxter, B.Sc. – Senior Technical Advisor

Geologist with over 40 years of international experience in mineral exploration, project evaluation, and mining finance. His exploration career focused primarily on the Americas, including 12 years in Nevada. Following more than three decades in technical and operational exploration roles, Mr. Baxter joined Scotiabank where he spent 15 years as an analyst with their Metals and Mining Investment Banking group.

Robert Weicker, B.A.Sc. – Senior Technical Advisor

Geologist with 30+ years in exploration and mine operations, including Chief Geologist at the Hemlo-region Williams Mine. Provides targeting strategies, program design, and technical due-diligence oversight across the Company's' portfolio.

Corporate Information



SHARE TABLE

● Issued and outstanding	45,665,675
● Stock options	2,525,000
● Warrants	9,886,594
<hr/>	
Fully diluted	57,477,269

STOCK SYMBOLS

● Canadian Securities Exchange	MAV
● Frankfurt	VR61
● Over the Counter BB	VRCFF

Address:

500 - 666 Burrard St.,
Vancouver, B.C.,
V9V 1W6

Transfer Agent:

Odyssey Trust Company
1310 - 1140 W. Pender St.,
Vancouver, B.C., V6E 4G1

Legal:

DLA Piper LLP
1133 Melville St.,
Vancouver, B.C., V6E 4E5

Contact

Glen Watson, President

604 803 5229

glen@maverickgoldsilver.com

www.maverickgoldsilver.com



MAVERICK
— GOLD & SILVER —